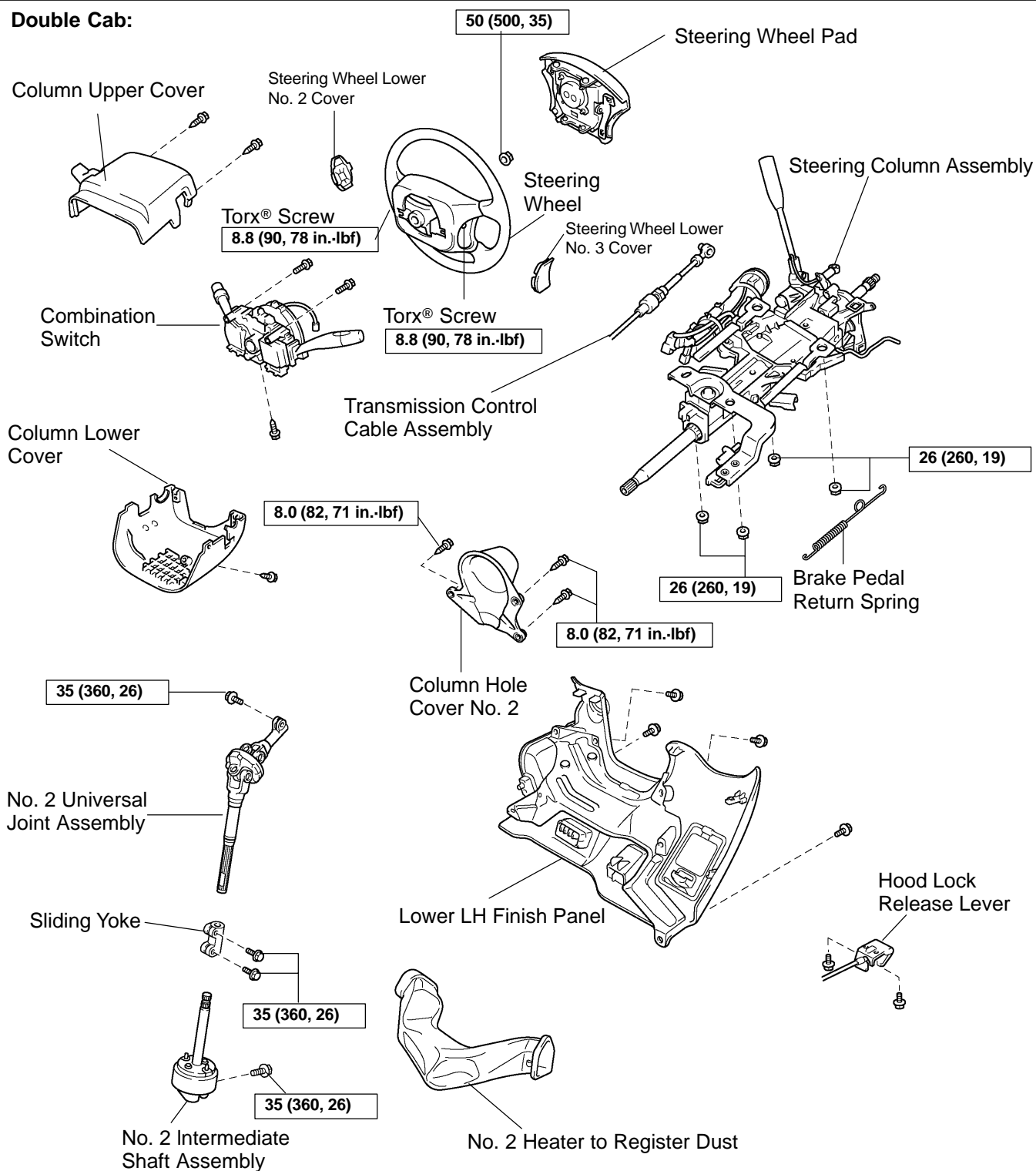


# COLUMN SHIFT ASSEMBLY COMPONENTS

AT13U-01

## Double Cab:

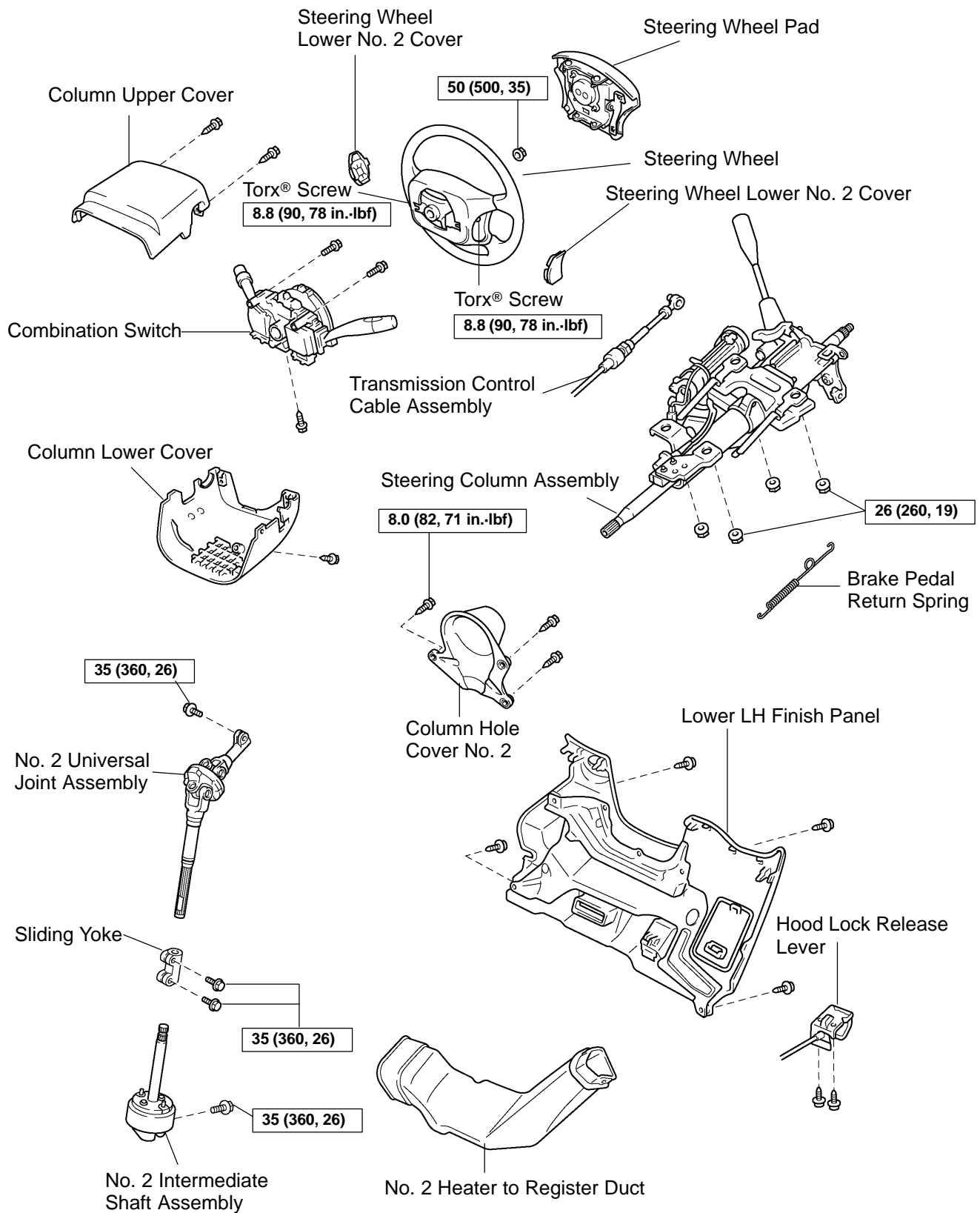


N·m (kgf·cm, ft·lbf) : Specified torque

N

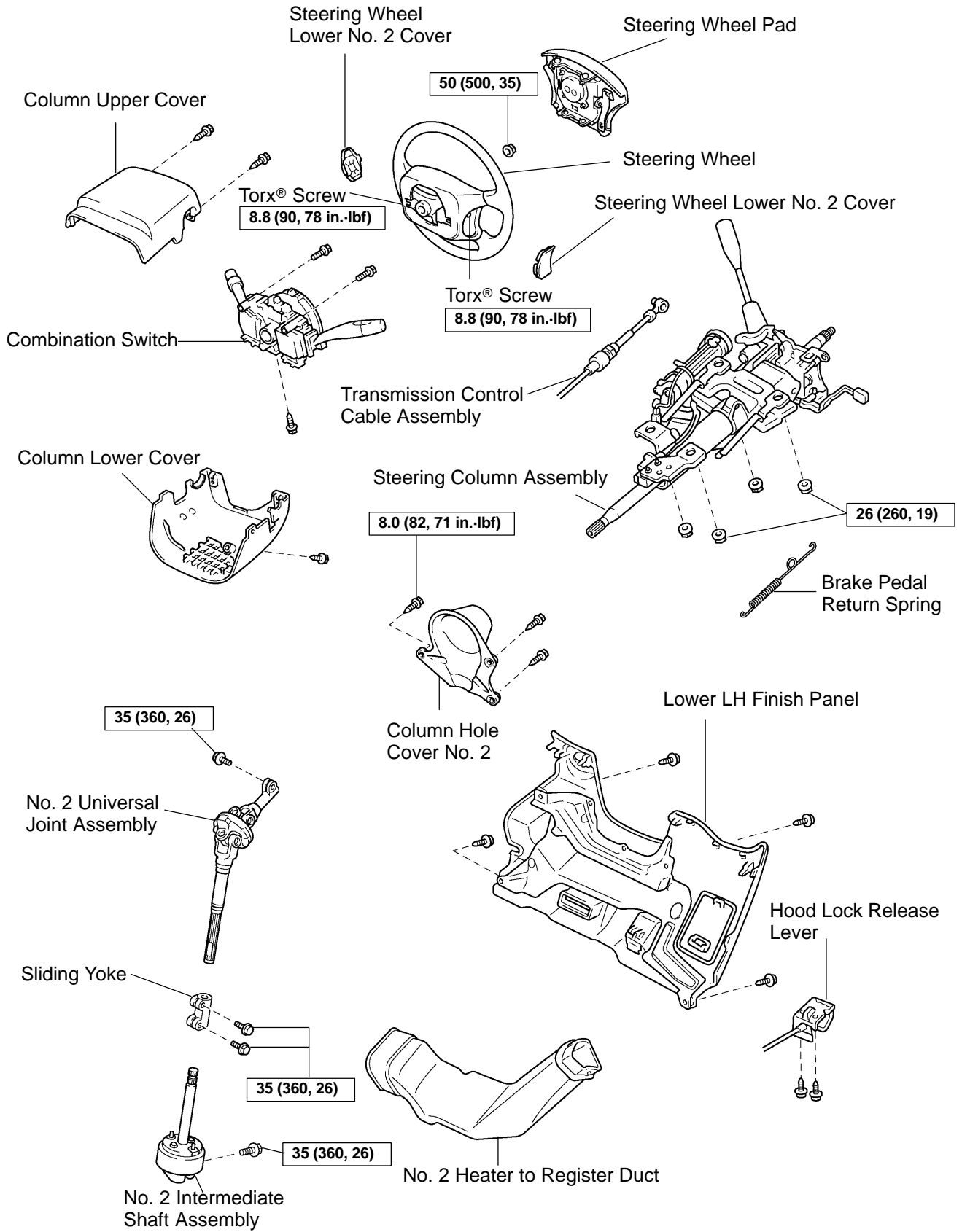
F19883

**Standard Cab, Access Cab:  
Non-tilt steering column**



N·m (kgf·cm, ft·lbf) : Specified torque

**Standard Cab, Access Cab:  
Tilt steering column**



N-m (kgf-cm, ft-lbf) : Specified torque

